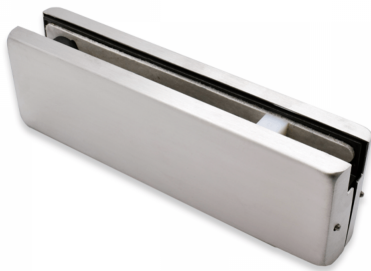


**GCC Top Patch Fitting - Satin Stainless ( Model: KGT20SS )**

- If the door panel is 3m high by 1m, 12mm thick glass is recommended. For doors that weigh 120kg and has a width of 1400mm a door rail fitting with a reinforced strap should be used.

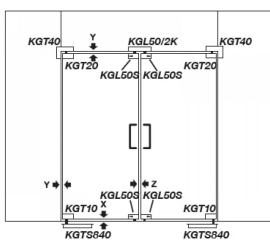
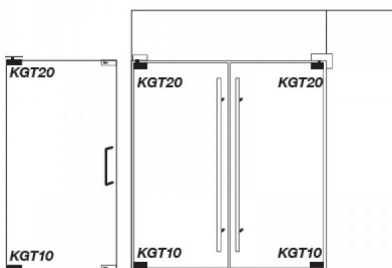
- All covers for MGA fittings are manufactured by using high grade SUS stainless steel sheet, precision stamping process and polished meticulously and body using high density aluminium alloy to meet industry standards.



**Attributes:**

**Product Code:** KGT20SS

**Unit Of Sale:** Each



**Installation Dimensions**  
X: 7-10mm Y: 2-4mm Z: 3-5mm

