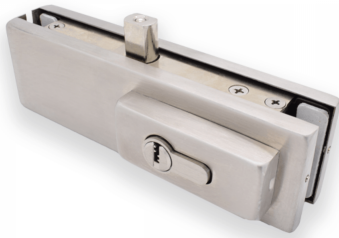


Corner Lock - Satin Stainless (Model: KGL50SSS)



- For Security and easy installation, all screw heads are in one side fixing & kept inside door.
- No need to take down door when changing the lock.
- Locks can be used left or right by simply loosening two screws.
- For Security an Inside Hardened Roller Pin is installed.
- Prepared for Europrofile Cylinder.
- MGA Europrofile Cylinders No. K9125, K9125T, K9126, K9126T.



Attributes:

Product Code: KGL50SSS

Unit Of Sale: Each

