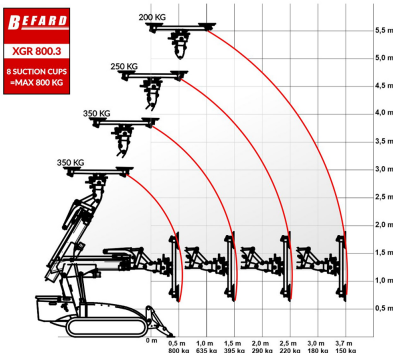
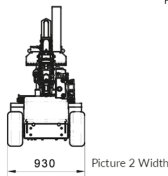
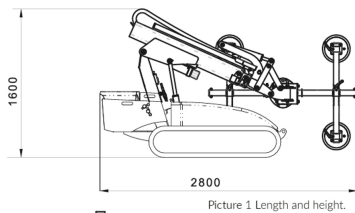


Glass & Window Installation Robot On Tracks - 800kg (Model: VHIREXGR800.3)



- Glass & Window Installation Robot On Tracks is a manipulator on caterpillars used to assemble heavy glass and windows. It can be equipped with extensions with a range of up to 5.5m. As standard, it is equipped with radio control - supporting both driving and machine operation. The use of tracked chassis enables operation in difficult construction conditions.

- Three hydraulic extensions with a total reach of 5.55m, color to choose from

- Two-circuit vacuum system, 8 vacuum suction cups

- Maximum capacity 800kg

- Rotating frame with suction cups - hydraulically

- Side shift of the frame with suction cups (right, left 10cm - hydraulic, depending on the selected option)

- Tilting frame with suction cups on the sides (in relation to the device - manually or hydraulically)

- Tilting frame with suction cups (possibility of lifting the element from the horizontal plane and plumbing it - hydraulically)

Attributes:

Product Code: VHIREXGR800.3

Unit Of Sale: Per Day

