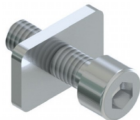


Bolt On Loft Style Mullion Bolt For 10mm Glass (Model: G.DK.LOFT.012.10)



- Available in three different lengths for different glass thicknesses.
- It is recommended that six bolts be used in a 3 metre length.
- The base profile must be drilled to allow the bolt through.

Attributes:

Product Code: G.DK.LOFT.012.10

Unit Of Sale: set of 6
