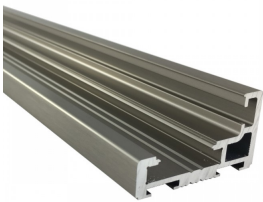


L Type Door Frame - Anodised (Model: G.DK.SG.SA.004)



This Anodised L-type aluminium door frame with integrated hinge & receiver profile is suitable for glass thicknesses of 8-10mm.

- All the cleats needed to assemble
- Recommended max door height - 2400mm.
- Above a height of 2200 mm, it is recommended to use 3 hinges.
- This profile is designed in a z type shape to cover the edge of the reveal and create a rebate for the glass door reducing noise and air movement.
- Installing of the hinges requires no drilling or milling and they can be adjusted in seconds.
- Available in anodised grey and black.



Attributes:

Product Code: G.DK.SG.SA.004

Unit Of Sale: 6 Metres

