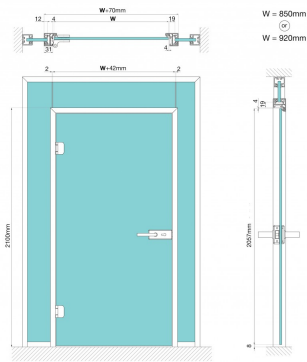


Dynamik 920mm X 2057mm Pre Cut Door Kit - Grey Anodised (Model: G.DK.SG.SA.920)

to size to suit a 920mm x 2057mm door leaf.



- All the cleats needed to assemble
- Pre mitred corners & gaskets.
- Hinges sold separately.
- Indicate the glass thickness to be used so the correct gaskets can be shipped.
- Available in anodised grey and black.

Attributes:

Product Code: G.DK.SG.SA.920

Unit Of Sale: Kit