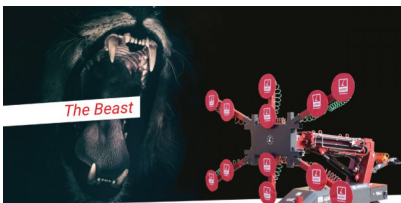
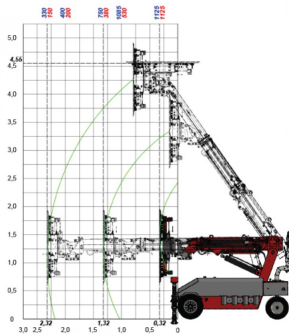


1125kg Capacity Glassworker Glazing Robot (Model: T.GR.GW.1125)



- Load capacity max. 1,125 kg, Dead weight with vacuum cross 1400 kg (vacuum cross 150 kg)
- Support legs individually controllable for more load capacity.
- Max. Lifting height 4.55 m, Max. lifting range to the front 2.32 m
- Radio remote control with LCD panel
- Electric/hydraulic control
- Vacuum cross can be removed without tools, Vacuum cross individually configurable.
- Self-monitoring system.
- 1,125 kg are no problem. Loads can be lifted up to a height of 4.55 meters. A quick-change device makes it possible to switch quickly and effectively from the vacuum cross to, for example, a forklift fork or a cable winch without tools.
- Hydraulic supports double the load capacity in use, Laser technology prevents falling from floors, over landings and steps. The vacuum cross can be quickly dismantled and used individually by means of a tilt adapter.

Attributes:

Product Code: T.GR.GW.1125

Unit Of Sale: Each

