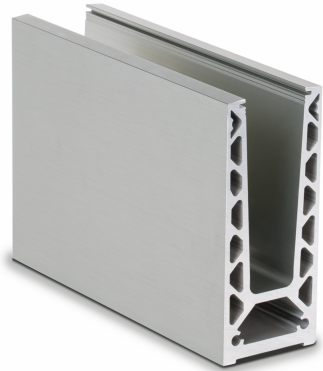
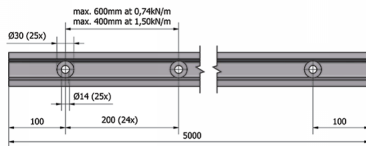


On Level 6020 Surface Mounted Kit For 21.5mm - 5 Metres (Model: K.ON.10.6020.SUKIT.021)



- Only 60mm wide this profile can achieve a line load level of 1.5kN with the appropriate glass selection.
- Extremely fast and easy installation. Can be fully installed from the balcony side avoiding the need for scaffolding or hoists
- Finished in a brushed stainless steel look as standard with other colours and finishes available on request.
- Kit contains 5 metres of the main surface mounted profile and the glass clamps and gaskets suitable for a 5 metre installation.
- Endcaps, corners, joining pins, etc. sold separately.



Attributes:

Product Code: K.ON.10.6020.SUKIT.021

Unit Of Sale: 5 Mtr

