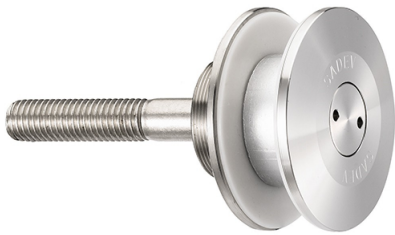


60mm Dia. Flat Head Fixed Bolt For 15 - 22mm Thick Glass (Ou (Model: KSP.V2004-1522-1266)



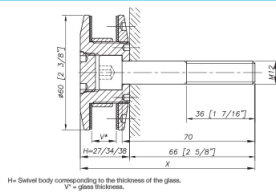
- Fixed bolt with a 60mm diameter flat head for use in spider glazing systems.
- Suitable for glazing from the outside or blind access glazing.
- Manufactured using 316 grade stainless steel.
- Standard 66mm long axis and suitable for 15 - 22mm thick glass. Please see the other bolts in the range for additional glass thicknesses.
- Special dimension glass bolts available on request.
- Glassparts recommend using thread locking compound whenever possible.

Attributes:

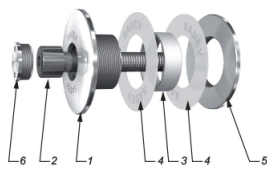
Product Code: KSP.V2004-1522-1266

Unit Of Sale: Each

Dimensions



Components



ITEM	QUANTITY	DESCRIPTION	UNIT
1	1	Body	X2 Cr Ni Mo 17 12 2 as per EN 10280-3
2	1	BEZEL DINGE M12-70	AA
3	1	Glass hole grommet	AW-1000K as per EN 573-1 / AW-21K
4	2	Contact washer	White (optional) / with polyethylene
5	1	Glass nut (EN5)	X2 Cr Ni Mo 17 12 2 as per EN 10280-3
6	1	Cover cap	X2 Cr Ni Mo 17 12 2 as per EN 10280-3

How to Use

Monothetic glass

Laminated glass

V + P² glass + interlayer film + P² glass

Mechanical Performance

Load (kN)	Deflection (mm)
0	0
10.0	1.0
20.0	2.0
30.0	3.0
40.0	4.0
50.0	5.0

Notes

1. Available for glass thickness from 6 to 22 mm. For other thicknesses please contact us.

2. A template is provided to determine the position and size of the hole required for glass installation. See: 15mm resolution, U.S.A. trademark, A.S.2-10-19

3. For laminated glass, the hole must be drilled in the interlayer film (EN5) (The interlayer of the spider to be used as support, or the thickness of an existing spider for the delivery of the spider).