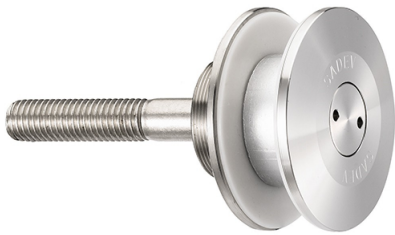
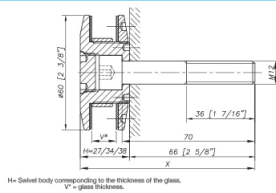


60mm Dia. Flat Head Fixed Bolt For 8 - 15mm Thick Glass (Out (Model: KSP.V2004-0815-1266)



- Fixed bolt with a 60mm diameter flat head for use in spider glazing systems.
- Suitable for glazing from the outside or blind access glazing.
- Manufactured using 316 grade stainless steel.
- Standard 66mm long axis and suitable for 8 - 15mm thick glass.
- Please see the other bolts in the range for additional glass thicknesses.
- Special dimension glass bolts available on request.
- Glassparts recommend using thread locking compound whenever possible.

Dimensions

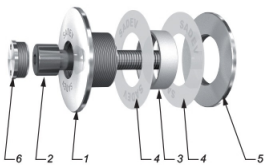


Attributes:

Product Code: KSP.V2004-0815-1266

Unit Of Sale: Each

Components



ITEM	QUANTITY	DESCRIPTION	UNIT/PRICE
1	1	Body	X2 Cr Ni Mo 17 12 2 as per EN 10280-3
2	1	BSF DIN912 M12-10	A4
3	1	Glass hole grommet	AW-1000K as per EN 573-1 / AW-25K
4	2	Contact washer	White (epoxy) / White (polyethylene)
5	1	Glass w/ 8mm	X2 Cr Ni Mo 17 12 2 as per EN 10280-3
6	1	Cover cap	X2 Cr Ni Mo 17 12 2 as per EN 10280-3

How to Use



Available for glass thicknesses from 8 to 15.0mm. For other thicknesses please contact us.
 * A template to guide the hole preparation will be supplied for glass preparation. (see "Notes" regarding U.S.A. trademark, A.S.2-10-19)
 ** Depending on the thickness of the hole, special hole preparation (EN 10280-3) is required. (The reference of the order to be used as support, or the thickness of an existing support for the hole) of the glass.

Technical Information

