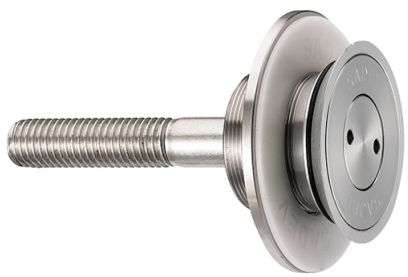
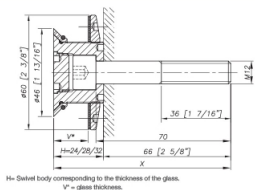


**Countersunk Fixed Bolt For 8 - 15mm Thick Glass (Outside Fix ( Model: KSP.V2002-0815-1266 )**



- Fixed bolt with a countersunk head for use in spider glazing systems.
- Suitable for glazing from the outside or blind access glazing.
- Manufactured using 316 grade stainless steel.
- Standard 66mm long axis and suitable for 8 - 15mm thick glass.
- Please see the other bolts in the range for additional glass thicknesses.
- Special dimension glass bolts available on request.
- Glassparts recommend using thread locking compound whenever possible.

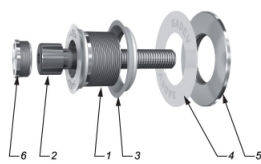
**Dimensions**



Attributes:

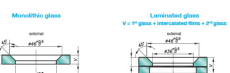
**Product Code:** KSP.V2002-0815-1266  
**Unit Of Sale:** Each

**Components**

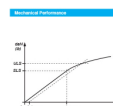


MARK.	QUANTITY	DESCRIPTION	ITEM NO.
1	1	Body	XZ C/N Ms 17.12.2 as per EN 10088-3
2	1	R8 CR02 M12-T6	MS
3	1	Clear hole gasket	AW 1000L as per EN 12753 / AS 5816
4	1	Control washer	White polyamide / white polyethylene
5	1	Glass set 8-15	XZ C/N Ms 17.12.2 as per EN 10088-3
6	1	Cover cap	XZ C/N Ms 17.12.2 as per EN 10088-3

**Glass Fitting**



Available for glass thickness from 8 to 20, 30mm, for other thickness please contact us.  
It is required to provide the following information when requesting: glass composition (type), glass thickness (min & maximum), hole diameter, hole shape (square or circular), hole location (X, Y). The installation of the spider to be used is subject to the installation of a suitable support by the glazier at the scene.



Order strength	Reference strength
1000 N (224.8 lb)	1100 N (247.5 lb)
1000 N (224.8 lb)	1200 N (269.0 lb)

\*kN = kilonewton (SI Unit).   
lb = pound (US Customary Unit).  
†Nett: tensile strength calculation according to EN 10002-2  
and shear strength calculation according to EN 10002-4