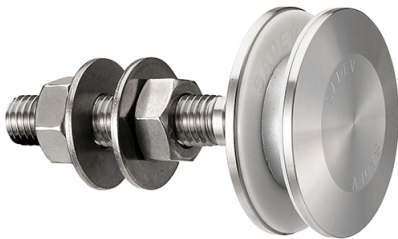


60mm Dia. Flat Head Articulated Bolt For 22 - 26mm Thick Gla (Model: KSP.R1003-2226-1465)

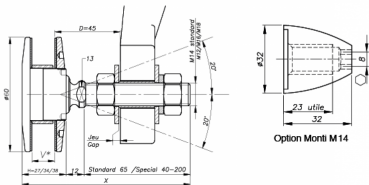


Attributes:

Product Code: KSP.R1003-2226-1465

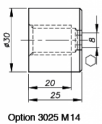
Unit Of Sale: Each

Dimensions



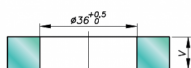
H = Swivel body corresponding to the thickness of the glass.

V = glass thickness

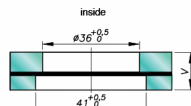


Glass Drilling

MONOLITHIC GLASS



LAMINATED GLASS



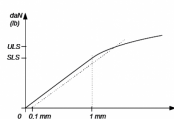
Available for glass thicknesses from 8 to 31.52 mm. For other thicknesses please consult us.
It is important to provide the following information with each request: the glass composition (e.g.: 10 mm monolithic, 8.8.4 laminated, 8.8.2.12.10 insulating) / the length and diameter of the threaded axle if not standard dimensions (M14, 60 mm) / the reference of the spider to be used as support, or the thickness of an existing support for the delivery of the spider.

Components



Order	Quantity	Designation	Material
1	1	Swivel body	Al 6061 T6
2	1	Threaded Axle	Al 6061 T6
3	1	Washer	Al 6061 T6
4	2	Conical washer	Al 6061 T6
5	1	Washer	Al 6061 T6
6	1	Flat Disc	Al 6061 T6
7	2	Washer	Al 6061 T6
8	1	Lock washer	Al 6061 T6
9	1	Flat Disc	Al 6061 T6
10	1	3025 Conical Washer	Al 6061 T6
11	1	3025 Flat Disc	Al 6061 T6

Mechanical Performance



Designation	Material
1025	Al 6061 T6
1026	Al 6061 T6
1027	Al 6061 T6
1028	Al 6061 T6
1029	Al 6061 T6
1030	Al 6061 T6
1031	Al 6061 T6
1032	Al 6061 T6
1033	Al 6061 T6
1034	Al 6061 T6
1035	Al 6061 T6
1036	Al 6061 T6
1037	Al 6061 T6
1038	Al 6061 T6
1039	Al 6061 T6
1040	Al 6061 T6
1041	Al 6061 T6
1042	Al 6061 T6
1043	Al 6061 T6
1044	Al 6061 T6
1045	Al 6061 T6
1046	Al 6061 T6
1047	Al 6061 T6
1048	Al 6061 T6
1049	Al 6061 T6
1050	Al 6061 T6