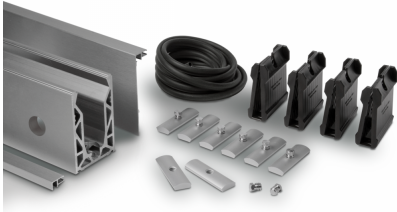


## Crystal View 3 Metre Side Mounted Kit For 15mm Glass ( Model: KCVSIKIT.015 )



- Complete 3 Metres of side mounted Crystal View System, which includes:
  - 3 metres of side mount channel
  - 3 metres of top seal
  - 3 metres of side cladding (bottom cladding not included)
  - 6 metres of gasket
  - 24 clamp bars & bolts
  - 12 glass clamps

- Suitable for 12mm thick glass and up to 1100mm high. Supplied in 3 metre lengths.

- Fixings to structure not included. Endcaps, dowels, bottom cladding and spanners sold separately.

### Attributes:

**Product Code:** KCVSIKIT.015

**Unit Of Sale:** 3 Metre



