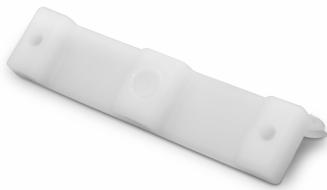


ROBUSTUS Damping device and anti-theft device ( Model: GSTR009 )



- Adjustable damping and anti-theft devices brake and hold the sashes and prevent them from being lifted off at their end position.

- The damping devices are integrated out of sight on the right and left-hand side of the double top guide.

Attributes:

**Product Code:** GSTR009

**Unit Of Sale:** Each

