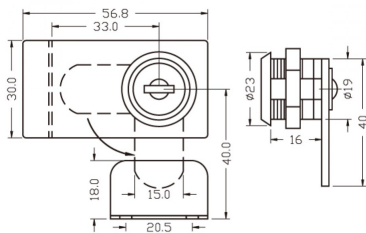


Extended Type Double Swing Door Lock Chrome (Model: I0007)

Cabinet swinging glass door lock for double door for glass thickness 5-7mm.



- Keys w/plastic cover
- 1 front plate - zinc alloy
- 1 hexagon nut 19mm
- 1 straight cam 40mm
- 1 m4 x 6 screw
- 1 plastic washer
- 1 L-type striking plate
- w/2 screws Size:30mm x 18mm(h)



Attributes:

Product Code: I0007

Unit Of Sale: Each

